



Planning Workshop on” Linking Information and Decision-Making to Improve Food Security in selected Countries of the Greater Mekong Sub-region”

02 December, 2009

Issue: Retail Market Information Collection and Analysis

Prepared by: Mr. Pich Pothy (NIS, MoP)



I. BACKGROUND

- Retail Market Information was Collecting into 5 markets in Phnom Penh city and another 5 Provinces in the country of Cambodia doing by Bureau of Consumer Price Index of National Institute of Statistics (NIS) Ministry of Planning since year 1993 until now.
- Retail Market Information was Collecting from Cambodia Socio Economic Survey (CSES) Series through sampled villages called Village Questionnaire.
 - CSES 2004, in 900 villages,
 - CSES 2007, in 360 villages,
 - CSES 2008, in 360 villages,
 - CSES 2009, in 900 villages still on the way



II. Technical of Data Collection

- Form for Price Collecting at Market in same quantity (one Unit)

Items Descriptions	Price Outlet 1	Price Outlet 2	Price Outlet 3	Price Outlet 4	Average Price
A					
B					
C					
D					
E					



II. Technical of Data Collection Continue

- For Village questionnaire [..](#)

ITEM NUMBER	ITEM DESCRIPTION	DESCRIPTION (MAKE, QUALITY, NAME, ETC.)	UNIT	PRICE IN RIELS		
				First observation	Second observation	Third observation
				RIELS	RIELS	RIELS
(1)				(2)	(3)	(4)
01	Ordinary paddy	Quality No.1, Neang Menh	Kg			
02	Rice	Quality No.1, white, 5 mm long, Neang Menh	Kg			
03	Broken rice	Quality No.2,white, short	Kg			
04	Corn on the cob	White, medium size, boiled	10 cobs			
05	Rice cakes	Ansom Pork cake, medium size	1 cake			
06	Fermented rice noodles	Coil, good	Kg.			
07	White rice noodles	Fiber type, good	Kg.			
08	Num Pang	30 cm long, small type	Loaf			

Source from CSES04



III. RESULTS AND FINDINGS

(A) Consumer Price index, Phnom Penh

Table 3.1 Consumer Price index, Phnom Penh						
Index, October - December 2006 = 100, by COICOP main categories and important product groups						
			2009			
COICOP main categories and important product groups		Weight	JAN	FEB	MAR	APR
00	All items (CPI total)	100.000	125.4	125.2	126.8	128.1
01	FOOD AND NON-ALCOHOLIC BEVERAGES	44.775	137.6	137.1	139.8	141.9
01.1.1.1	RICE	6.162	168.4	168.5	169.1	168.8
01.1.2	MEAT	9.681	137.3	139.6	141.6	146.7
01.1.2.1	PORK (FRESH)	5.618	137.6	143.2	144.3	147.6
01.1.3	FISH AND SEAFOOD	9.310	118.8	118.8	124.7	125.9
01.1.6	FRUITS	4.736	139.9	139.7	141.1	149.2
01.1.7	VEGETABLES	4.814	135.4	126.0	123.1	127.6
02	ALCOHOLIC BEVERAGES, TOBACCO AND NAF	1.625	113.7	116.3	118.5	118.8

Data source from CPI



III. RESULTS AND FINDINGS

(A) Consumer Price index, In Phnom Penh ([NEW CPI Jan to Apr 2009.xls](#))

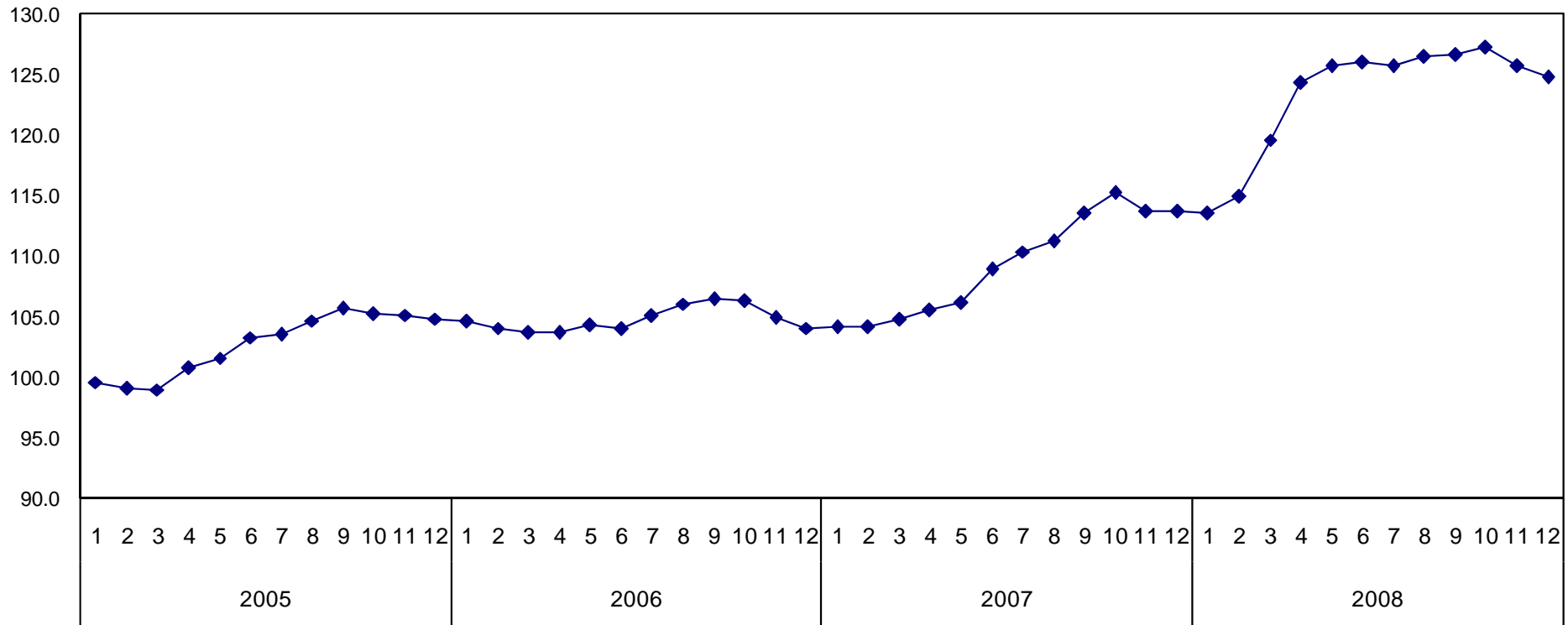
CPI Phnom Penh				
Descriptions	Average Price			
	200901	200902	200903	200904
Rice, quality no.1 White, Phaka kanhey, Battambang	2510	2500	2510	2510
Rice, quality no.2 White, Neang-Menh, Battambang	2060	2060	2070	2060
Pork, without fat, Pure meat	14950	15600	15425	16060
Pork, with fat, Khmer	12800	13250	13700	13650
Fresh Beef, No.1	22300	21550	22000	23400
Fresh Chicken, No1, plucked	17350	17300	17950	18800
Fresh duck, Plucked	11250	11245	11825	11600
Roasted/Fried chicken	28688	29188	28938	30125
Mud fish, (large) 1 fish =1kg	11200	11815	11550	11950
Shrimps, Medium size,Kampot	23895	23158	26158	25526
Crabs, Kdam Ses, sea crab, Kampot	23842	23947	25895	26684
Banana, ripe, medium, Cambodia	1920	1895	1885	1915
Rambutan (ripe) Vietnam	3095	3165	3095	3515
Papaya ripe	2605	2615	2600	2635
Durian (ripe) Thai	7945	8295	8250	8570
Water melon Medium,	2950	2885	3000	2990
Cabbage leaves	2755	2280	1855	1800
Cucumbers, Green,medium size	2025	1600	1345	1630

Data source from CPI



III. RESULTS AND FINDINGS

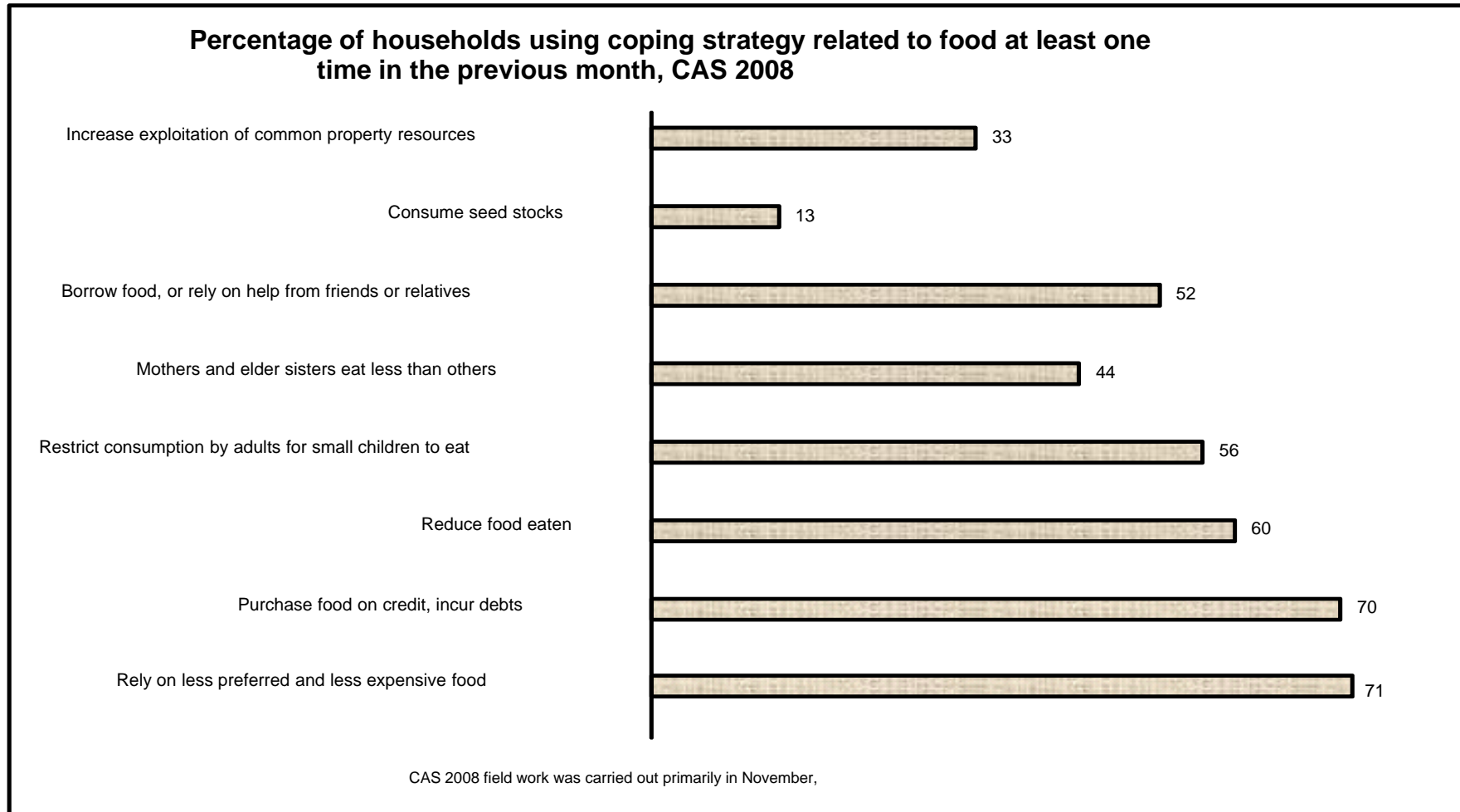
Relative price of food (food price index/consumer price index) by month in Cambodia from January 2005 to December 2008



Data source from CPI



III. RESULTS AND FINDINGS



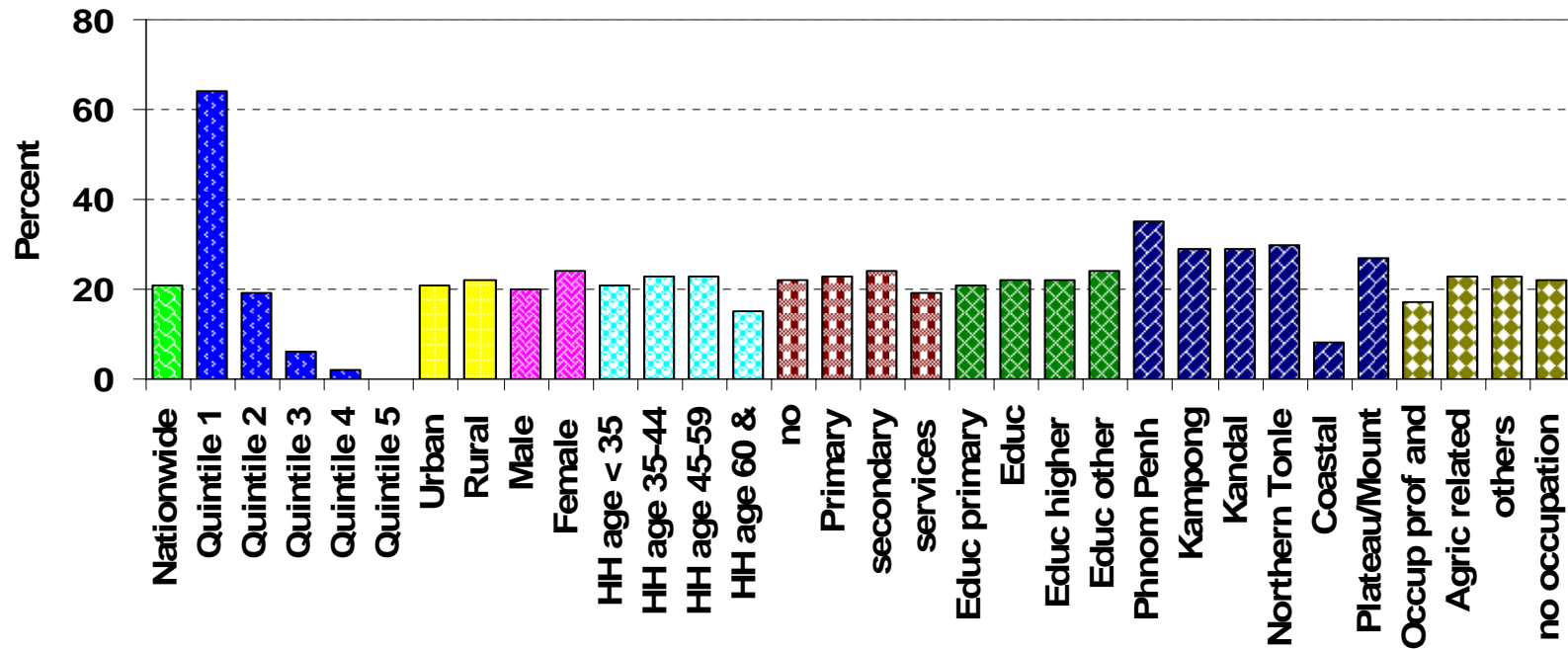
Data source from CAS 2008



III. RESULTS AND FINDINGS

(A) Magnitude of food deprivation

Proportion of food deprivation in total population

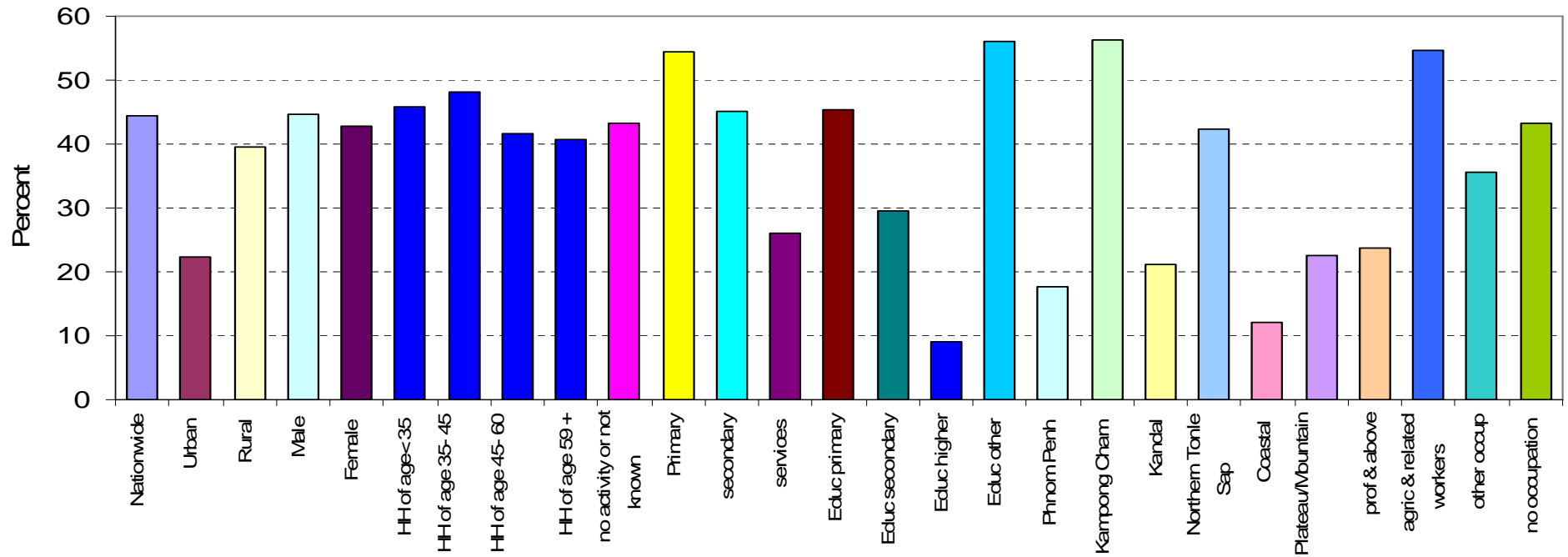


Data source from CSES04



Food poverty

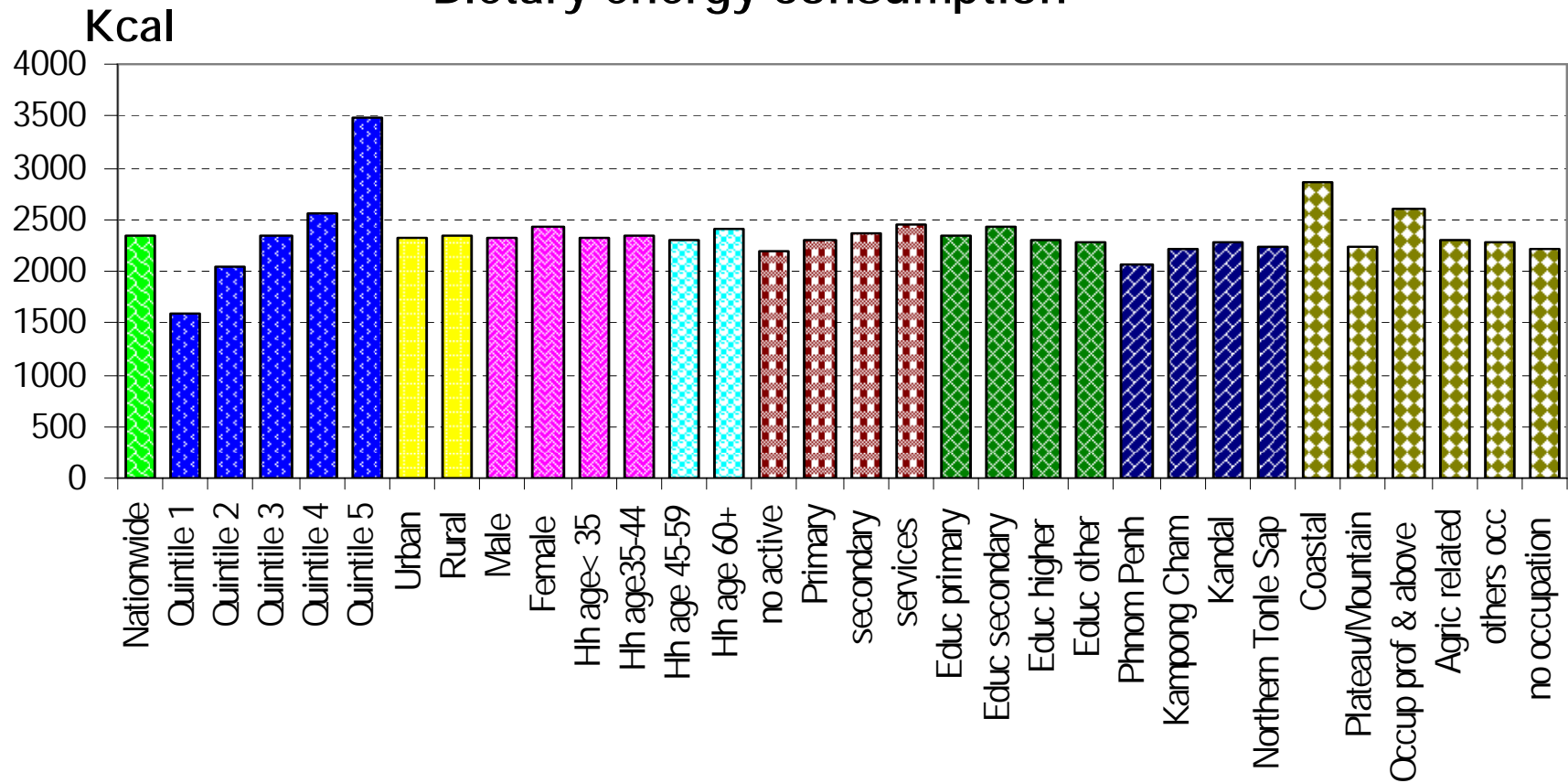
Critical Food Poverty



Data Food Insecurity Assessment Derived from CSES04



Dietary energy consumption



Data Food Insecurity Assessment Derived from CSES04



➤ Methodological Improvements in the CSES

- To review questionnaire design for better targeting food consumption in addition to acquisition
- standardization of measurement units
- revise the CSES nutrient conversion table

➤ Factors affecting food security

- Income particularly in remote rural areas and urban
- Inequality in the distribution of food in the population



**Thank you for your
attention !!!**